

The Complete Package

Judd Ranch

www.juddranchinc.com

Fall 2022

MATERNAL POWER

You can buy with confidence knowing that Judd Ranch females are efficient, fertile and productive.

Behind every good bull is a good dam. Efficient, fertile and productive females are the foundation of the most successful cow herds. For 21 out of the last 24 years — 1998 through 2021 — Judd Ranch has been at the top of two prestigious American Gelbvieh Association (AGA) lists: No. 1 breeder of Dams of Merit and Dams of Distinction and the AGA's No. 1 owner of Dams of Merit and Dams of Distinction.

In 2021, Judd Ranch was recognized as one of the top owners of Dams of Merit and Dams of Distinction with 19 Dams of Distinction and 64 Dams of Merit — 83 total honored females.

In the breeder category, Judd Ranch was recognized with 97 honored females — with 20 Dams of Distinction and 77 Dams of Merit.

AGA Program

The AGA's Dam of Merit program recognizes cows that meet

strict selection criteria including early puberty and conception, regular calving intervals and above-average weaning weights on at least three calves. The Dam of Distinction honor acknowledges cows that meet the same high standards for superior, long-term production with at least eight calves.

Dam of Merit and Dam of Distinction females must qualify each year. Thus, earning the No. 1 spot one year does not guarantee a repeat performance. It all depends on each cow's performance and the performance of her offspring, year after year.

AGA requires each female designated a Dam of Merit or Dam of Distinction to earn her award. Only 6.2% of the registered females in the Gelbvieh breed qualified for 2020 Dam of Merit honors, and just more than 1% met the criteria for the Dam of Distinction honors.

AGA's Dam of Merit/Distinction program recognizes breed-

leading, elite females that excel in productivity and longevity, two key economic traits that contribute significantly to profitability in the cattle business.

Bottom line: It means that Judd Ranch genetics are stacked with top-of-the-line performance, fertility and maternal power — and nowhere else can you get this type of combination in a female package. Every purebred Gelbvieh and Balancer female selling in this year's sale has one or more Dams of Merit/Distinction in his pedigree. That's extra maternal power for you. ❖



Here's a typical Judd Ranch mama JRI Ms Sugar And Spice 140C32 photographed as a third-calf female with her powerhouse bull calf at side. This bull calf featured an 81# birth weight with a whopping 996# actual weaning weight. Ms Sugar And Spice's red, homozygous polled purebred daughter JRI Ms Pistol Annie 140H429 ET sells October 8th in the spring-bred heifer offering and she's safe in calf to SAV Rainfall 6846 for a Feb. baby.



Amazing cow power like this is yours with Judd Ranch genetics. This beautiful female JRI Ms Busy Bee 285Y709 was photographed as a first-calf heifer with her scalebusting 1,015# actual weaning weight bull calf at side. October 8th Ms Busy Bee's homozygous black, homozygous polled Optimizer granddaughter JRI Ms On The Bright Side 285J493 sells in the fall open heifer offering with a 77# birth weight/whopping 704# 205-day weight.



32nd Annual
Judd Ranch
Gelbvieh, Balancer
& Red Angus
**Cow Power
Female Sale**
Saturday, Oct. 8
12 noon
at the Ranch
Pomona, Kansas
One hour southwest
of Kansas City

Don't Miss Judd Ranch on The American Rancher!

Judd Ranch will be featured on
The American Rancher
Monday, Sept. 12 at 8 p.m. central time.

The episode will also air again at midnight
Monday, Sept. 12 and 11 a.m. Sunday, Sept. 18.

The American Rancher, hosted by Pam Minick, is in its 18th year of broadcasting on RFD-TV. The series began in the fall of 2004 and brings audiences in touch with the people and places that make ranching an American lifestyle.

The half-hour television series reaches a vast audience through RFD-TV (DISH-231 & DirecTV-345). The American Rancher features a variety of topics including seedstock producers, genetics companies, breed associations, western heritage and more. Each week, viewers can enjoy a glimpse into the lives of hardworking men and women who contribute to America's beef industry.

"We're excited to share the Judd Ranch story on *The American Rancher*," says Roger Gatz of Cattlemen's Connection and Judd Ranch consultant. "The episode will feature footage from around Judd Ranch including females and bull calves on pasture."

Set your DVRs, you won't want to miss the Judd Ranch premiere on RFD-TV the week of Sept. 12.

Udder Significance

Teat and udder structure are key to a functional cow herd.

Cows with good udder quality not only require less labor but also may have improved longevity due to lower incidence of mastitis or injury.

“Udder suspension is important. Well attached udders (tight to moderate) are less susceptible to injury and contamination from mud and manure,” says Steve Huntzicker, former University of Wisconsin agricultural agent.

Udder quality is an important factor related to cow longevity and calf performance. When cows stay in the herd longer, fewer replacement heifers need to be developed or purchased to maintain herd size. Pendulous, poorly suspended udders and large teats are difficult for newborn calves to nurse, and additional labor might be required to assist those calves.

Increased calf mortality may result from cows with poor udder structure. The calf struggles to nurse and may consume colostrum outside of the desired time frame of 24 hours. Because many beef producers sell calves by the pound at weaning, poor udder quality can have a negative impact on profit.

“The condition of the cow’s udder can have a major impact on the overall performance of the calf,” Huntzicker says.

Not only is milk production key, but poor physical structure of the udder can make it a challenge for the young calf to get access to the milk it needs. This can lead to decreased calf growth even if the cow is producing an adequate milk supply.”

Research shows that udder scores in beef cattle are moder-

Every animal pictured in this newsletter features teat and udder excellence. They are all Judd Ranch born and raised.

ately heritable. Two scores are typically taken on beef cows: suspension and teat size. The heritability for suspension is .32 and .28 for teat size. What these values tell us is that females with good — or bad — udders tend to pass that trait to their daughters.

If you’re looking for a way to increase your herd’s profit potential, beef extension specialists suggest raising or purchasing females that excel in teat and udder conformation.

Rick Rasby, University of Nebraska beef extension specialist, says raising or purchasing females that have excellent or above-average teat and udder conformation can increase the number of dollars that go into your pocket. How? By increasing calf performance, reducing calf sickness, increasing longevity of the cow and reducing



*Oh my, look at the bull calf this Judd Ranch 017 cow family daughter JRI Ms Amber 017S9 is raising. Ms Amber is currently 15 years of age with a remarkable 365-day annual calving interval. **Saturday, October 8th, Ms Amber's homozygous black, homozygous polled Resource granddaughter JRI Ms Reva 017H25 sells in the spring-bred heifer offering with a 75# birth weight/whopping 787# 205-day weight.***

labor inputs.

David Kirkpatrick, PhD, University of Tennessee, agrees with Rasby, calling udder and teat conformation “one of the most important functional traits of a beef cow.”

“Udder shape and conformation affect cow productivity and longevity,” Kirkpatrick says. “Udder and teat quality are important functional traits and appear to be heritable. Their soundness should be an important concern because of their relationship to injury and mastitis and calf performance affected by reduction of milk flow.”

Two experiments showed that clinical mastitis in beef herds occurring at the rate of 17.5 percent and 11.5 percent, resulted in a reduction in weaning weights of 12.5 percent and 7.3 percent, respectively.

Rasby stresses that poor udder and teat conformation can also potentially lead to increased calf sickness as teats may be contaminated with mud and debris from a dirt pen or calving area before the calf suckles.

In addition to udder and teat quality being functional traits, Ron Torell, Nevada Livestock Specialist, and Robert Pawelek, Oregon State University, contend that anyone who has ever attempted to milk out a “sore-bagged, balloon-teated” cow will likely agree that teat and udder quality are also a

“convenience trait.”

The Mississippi Beef Improvement Association stresses the importance of teat and udder structure: “Poor udders set up a calf for a rough start in life. Unless your management can handle a recurring bad udder – sell her.”

That begs the question: And replace her with what?

Simple answer: A female that excels in teat and udder structure – and that has the pedigree, performance and fertility to produce a profitable calf year after year without any teat and udder challenges.

Judd Ranch consultant Roger Gatz, Cattlemen’s Connection, says cow-calf and seedstock producers touring the Judd Ranch pastures typically comment on the uniformity of the cows and their excellent teat and udder quality.

“You can see the superior teat and udder quality in every photo in this newsletter, and every female photographed is Judd bred and you will see this same high quality when you check out the Judd Ranch herd,” Gatz explains. “You won’t find a better teat-udder program in the beef industry!”

“And, with Oklahoma State University beef researchers putting udder soundness at up to 25 percent heritable, adding Judd Ranch genetics to your herd can boost your teat and udder conformation down the road.” ❖



*This many-time honored Judd Ranch Dam of Merit female JRI Ms Extra Wonderful 254M76 ET is nursing one tremendous bull calf. **Her black, homozygous polled purebred granddaughter JRI Ms Sweet Tee 254J17 sells in the fall open heifer offering with a performance-plus 765# 205-day weight.***



Judd Ranch honored Dam of Merit females are fertile/calf raising machines and mercy, note this honored Dam of Merit female's bull calf.

Curious about the sale offering?

Roger Gatz, ranch consultant, has worked with Judd Ranch for more than 30 years and has visually inspected every female in the sale. He will share his open and honest opinion about any female in the sale.

Call him today at 800-743-0026.

**Call today for your sale catalog:
1-800-743-0026**

This newsletter is brought to you by Judd Ranch Inc.



**Dave & Cindy Judd
Nick & Ginger Judd & family
Brent & Ashley Judd & family
Pomona, KS 66076
Phone: 785/566-8371
www.juddranch.com**

Judd Ranch

**#1 Dam of Merit & Dam of Distinction Breeder
#1 Dam of Merit & Dam of Distinction Owner
for 21 out of the past 24 years**

JUDD RANCH PRIORITIES:

Producing Fertile, Uniform, Efficient Females while Developing the Next Generation



Three generations of Judds work together to raise superior Gelbvieh, Balancer and Red Angus cattle that exceed customer expectations.

The Judd Ranch story began in 1981 when high school sweethearts Dave and Cindy Judd purchased the ranch headquarters just west of Pomona in the picturesque Kansas Flint Hills.

Judd Ranch is home to stout bulls, fertile females and a family who works together to produce superior cattle for their customers. As soon as you drive on the ranch you quickly realize it is a family operation, with three generations of Judds working together to raise quality seedstock for the commercial cattleman.

The Judd family has enjoyed decades of success and realize it all started with satisfied customers. Along with providing solid, dependable cattle, customer service is a top priority.

“You can have the best cattle in the world, but, if you don’t have a person’s trust, then those cattle aren’t worth a dime,” Dave explains. “Cattle have to meet a customer’s expectations and you have to be a man of your word. Those two factors go hand-in-hand. One without the other doesn’t work.”

The Judds stand behind what they sell and are appreciative of the loyalty and repeat customers they have had through the years.

“Sometimes we take for granted the miracles that happen in our business, such as a healthy, newborn calf or a good rain to green



Meet the Judd's: (left to right), Nick and Ginger Judd with children Lacy, Levi and Lily; Ashley and Brent Judd with son Oliver (missing is daughter Avery Jo born in October 2016); and Dave and Cindy Judd. You are seeing the Judd Ranch family just as they often spend the day on horseback. That said, it takes a lot of coordination to get everyone together in one photo. Like most ranchers, the Judd Ranch crew prefers to be working rather than posing for a family photo.

pastures up,” Dave says. “We feel especially rewarded when our customers return to us year after year to purchase seedstock.”

Judd family members agree that they are constantly trying to improve their genetics to meet customer demands. “We all have the same goal of producing a great product for our customers,” Cindy says, explaining customers to include those who buy beef at the grocery store and those who buy Judd Ranch bulls and females.

In the beginning

The original ranch purchase

included a herd of Polled Herefords. Brangus females bred to Gelbvieh bulls were quickly added to the herd. Impressed with the results of Gelbvieh-influenced calves, the Judds purchased a large number of half-blood and 3/4 blood Gelbvieh females in 1982 and began working toward a purebred Gelbvieh herd.

Dave says this decision was based on extensive research, including data from the U.S. Meat Animal Research Center (USMARC) that showed Gelbvieh produced more pounds of weaned calf per cow than any other widely used breed. Gelbvieh had also earned a reputation for its heat tolerance and maternal qualities, such as fertility and milk.

“Data from USMARC continues to show the power of the Gelbvieh breed,” Dave says. “Through the years, Gelbvieh has reduced mature cow size and research shows that Gelbvieh has the earliest age at puberty and has the lowest birth weight of the four main continental breeds.”

Since 1981, Dave and Cindy have built the Judd Ranch from the ground up, adding land and cattle while raising their family. Today, Judd Ranch with Gelbvieh, Balancer and Red Angus seedstock ranks in the top 25% of seedstock

operations in the country and both sons are back on the ranch with their families.

The Judds host two sales per year at the ranch – the Annual Bull Sale is the first Saturday in March, and the Annual Female Sale is the second Saturday in October.

Dave and Cindy have been members of the American Gelbvieh Association (AGA) since 1983. They have been very active, including Dave serving on the AGA Board of Directors from 2004-2009. The couple was inducted into the AGA Hall of Fame in 2016.

The Judd program

Producing the complete package – calving ease, growth, carcass, fertility and being a source for heterosis – is the goal at Judd Ranch.

Strengths of the Judd Ranch cow herd are productivity, fertility, uniformity, calving ease, moderate frame, easy disposition and udder quality. The herd is genetically uniform and possesses a good balance of traits, due to stacking generations of like phenotypes and genotypes. Thus, the bulls they produce are deep bodied, thick and structurally sound.

Dave explains his focus has always been the maternal traits.

“They make the cow-calf guy the most money, yet they are the least heritable. Milk and fertility can be antagonistic traits, so you have to select for both,” he explains. “We require our cows to be pregnant each year and bring in a big calf.”

The Judd Ranch program has both fall and spring calving seasons. About 90% of the females are artificially inseminated (AI), with the remaining 10% pasture bred to Judd Ranch herd sires. In addition to its extensive AI program, Judd Ranch’s top genetics are propagated via embryo transfer (ET), flushing 15-20 females three times a year.

Dave is a stickler for timing. This attention to detail is why Judd Ranch has been the AGA’s No. 1 breeder of Dams of Merit and Dams of Distinction for 21 of the past 24 years.

In 2000, when customer demand revealed the need for a second breed, Judd Ranch chose Red Angus.

“Identifying a second breed required as much research as when we were looking for a breed back in the early 1980s,” Dave explains. “We chose Red Angus as our second breed because it complements Gelbvieh.

“Red Angus excel in carcass
(Continued on Page 5)



JRI Extra Sassy 140S65 is a typical Judd Ranch female. Photographed at 10 years of age, this homozygous polled purebred Gelbvieh featured a profit-driven 365-day annual calving interval and her five sons to date have averaged a whopping 946 pounds on actual weaning weight.

Are Judd Ranch Females Worth It?

Here are four facts about Judd Ranch that can help buyers decide whether purchasing one or more Judd Ranch females is the right decision:

1) Judd Ranch is the American Gelbvieh Association's No. 1 breeder and No. 2 owner of Dam of Merit and Dam of Distinction females. These two awards are a standard occurrence, with Judd Ranch receiving both honors for 21 out of the past 24 years. That's cow power you won't find elsewhere.

2) Judd Ranch Gelbvieh and Balancer bulls consistently bring home one or more Champion or Reserve Champion Pen of 3 or 5 banners from the National Gelbvieh and Balancer Pen Bull Show.

3) Judd Ranch's annual bull sale is one of the country's top bull sales, with cattlemen from more than 20 states typically purchasing bulls. Since 2000, Judd Ranch has put 5,327 bulls through the sale ring, and these bulls have averaged \$4,911. This past spring's bull sale was one of the best in the country for all breeds. You have the opportunity to purchase some of the very best females, their daughters and/or granddaughters that have produced these extremely high-quality bulls.

4) Judd Ranch females are very affordable. Judd Ranch's past 23 female sales have seen 2,765 females go through the sale ring

for an average selling price of just \$2,653. When you compare the average for the female sales with the average for the bull sales, there is a \$2,258 difference. That's right, the females in Judd Ranch sales have averaged \$2,258 less than what the bulls have averaged in the last 23 sales. We're talking many of the females that have been the dams — the factories — that have produced the very Judd Ranch bulls that cattlemen across the country want in their herds.

Bottom line: Judd Ranch females have only averaged 54 percent of the average selling price of the bulls over the last 23 years and those females are the factories helping produce that bull sale average.

In a nutshell, Judd Ranch females are a bargain.

As with past Judd Ranch female sales, this year's sale includes several spring- and fall-bred females. Thus, you have the opportunity to purchase a Judd Ranch female that will be carrying a Judd Ranch-bred bull or heifer calf. In addition to getting a calf that carries 100% Judd Ranch genetics, you get the female and can then go back on her with a Judd Ranch bull to produce the very same animals you find in Judd Ranch bull and female sales. What a great opportunity!

In addition to the fall-bred cows, this year's sale includes fall-born yearlings ready to breed — or

they can be kept over and bred for a spring program, coming yearling spring-born heifers and spring-bred heifers and cows. Spring-bred cows will circle the sale ring with their spring-born bull calves, with the bull calves not selling. On occasion, a spring-bred cow's spring heifer calf will sell.

"I can't tell you how many discussions Roger and I have when he's at the ranch selecting females for the sale," Dave Judd explains. "He wants certain females in the sale, and I want to keep them. Roger frequently has to remind me that we have several full sisters in the herd and that we can't keep everything to ourselves."

"Bottom line is that we want to give our customers some powerful females to choose from — and it's all worth it when we hear customer success stories and how our females have worked for them."

Customer satisfaction

"I can't tell you how many times I hear remarks after the sale such as, 'I always thought I would have to pay so much more for a Judd Ranch female simply because she is a Judd Ranch female but that wasn't the case' or 'The prices at a Judd sale are certainly lower than I thought they would be,'" says Roger Gatz, Cattlemen's Connection and Judd Ranch consultant. "Females in a Judd Ranch Cow Power Sale typically bring right in the ballpark of females in other sales. To say that a lot of females in a Judd sale are truly bargains is an understatement. Honestly, many of the females going through the sale will pay for themselves in their first or second year, thanks to the prices that their offspring bring."

To further ensure that you are purchasing elite genetics at Judd Ranch, more than 99 percent of the females selling October 8 are sired by breed-leading, homozygous polled AI sires and 100 percent of the bred females are safe in calf to breed-leading homozygous polled sires.

To learn more about females offered in the Saturday, Oct. 8 sale, contact Roger at 800-743-0026. He has seen and personally inspected every female in the sale and has taken copious notes on each. He can give you input beyond what is in the sale catalog and discuss the best options for your herd. ❖



JRI Ms Eternal Echo 148K60, seen here nursing her powerhouse bull calf, was one incredible producer. She was honored seven consecutive years as a Dam of Merit/Dam of Distinction, receiving Dam of Distinction honors as a 16-year-old female. Her polled purebred granddaughter JRI Ms Charlee 148J370 sells in the fall open heifer offering with an 76# birth weight/697# 205-day weight and producers, Ms Charlee nursed a 10-year-old Dam of Distinction dam with a 365-day annual calving interval.

Be Sure to Visit JuddRanch.com



Did you know you can find Judd Ranch online at *JuddRanch.com*? We invite current and potential customers to visit the ranch virtually at *JuddRanch.com*. When you arrive at the site you will first see a "Watch Now" button that takes you to a video to see what customers are saying about Judd Ranch.

On the site you'll also find Judd Ranch herd bulls and upcoming sale information, as well as information about the Judd Ranch herd health and Balancer breeding program.

The "Ranch Tour" page is a collection of photos from around the ranch. The "News" page has links to Judd Ranch newsletters and other news releases about the ranch. The "Contact" page has a map and directions to the ranch, contact information for the Judd family

and a form for visitors to request a catalog or other information.

The "October Female Sale" page includes information about the upcoming Judd Ranch 32nd Cow Power Female Sale. Watch this page for the sale catalog and updated offering information as sale time grows closer.

The Judd Ranch website was named the 2019 Livestock Publications Council first-place breeder website.

"Our goal with the Judd Ranch website is to provide you with an in-depth look at Judd Ranch's No. 1 honored Dam of Merit program," says Roger Gatz, Judd Ranch consultant. "The site allows current and potential customers 24-hours-a-day, 365-days-a-year access to Judd Ranch genetics and sale information." ❖



Oh man, check out this beef machine bull calf photographed at the side of his 9-year-old dam JRI Ms Peek A Boo 214Y34 and producers, this beef machine posted a whopping 1,020# actual weaning weight. October 8th Ms Peek A Boo's ET black, homozygous polled purebred 4-year-old daughter JRI Ms Inspiration 214F441 ET sells in the spring-bred female offering and she's safe in calf to JRI Bandito 253H32, Judd Ranch's 2021 National Champion Bull.

Judd Family Ranch

(Continued from Page 3)

quality, and they have excellent maternal characteristics and moderate size. They also have great dispositions and feeding characteristics.”

With a Gelbvieh herd and a Red Angus herd, it was a natural fit for Judd Ranch to offer customers a third breed: Balancer. Balancers are the result of mating Gelbvieh with either Red Angus or Angus. A registered Balancer must be at least 25%, but not more than 75% Gelbvieh, with the remaining percentage either Angus or Red Angus. A Balancer combines the fertility, growth, muscle and leanness of Gelbvieh with the maternal and marbling qualities of Angus or Red Angus.

“Balancer bulls are an excellent option for cowmen who would like some benefits of heterosis, but don't want 100% Gelbvieh influence,” Dave adds.

The ranch

When Dave and Cindy put the ranch together, they tried to develop a balance of grasses.

The cattle run on native prairie and fescue grass. The bulls go through gain test in large, rocked pens. After gain test, they are turned out in pastures with no supplemental feed.

“We don't pamper the cattle,”

Dave says. “We don't want feet problems. We want them ready to go to work for our customers.”

Cows carrying the Judd Ranch brand must thrive in both extremes when it comes to weather. Summers at Judd Ranch can be extremely hot and humid, and the Kansas Flint Hills winters can be harsh with a lot of moisture. The ranch averages about 111 days below freezing each year and averages 38 inches of precipitation.

With females and bulls selling into over twenty states annually across the country, customers report that Judd Ranch cattle thrive and breed well in all parts of the U.S.

In addition to the seedstock operation, Judd Ranch has a diversified farming operation, consisting of corn, beans and alfalfa, producing its own feed. In good weather years, the family also markets a large portion of the ranch's alfalfa, prairie and brome hay.

Built on years of data

Numbers are important at Judd Ranch — not numbers as in who has the most cows or sells the most bulls, but numbers related to objective measurements.

The Judd Ranch program has more than 10 generations of objective performance data it relies on when it comes to decision-making. Data includes birth, weaning and yearling weights, rate of gain and measurements for pelvic



It's just another ordinary day in the Judd Ranch pastures where females do what they are bred to do. This bull calf at side of his first-calf heifer dam weighed 72 lbs. at birth, posted an actual 990 lb. weaning weight and hit the yearling scales at an impressive 1,316 lbs.

area, scrotal circumference, frame, back-fat and ribeye area. In recent years, DNA testing has been added to this data.

“At Judd Ranch, every cow is viewed as a factory,” Dave explains. “As a beef factory, each female's job is to cycle, breed and calve on a regular basis and then to raise a calf that is genetically superior to her and the sire of her calf. In addition to being extremely fertile and a high-quality factory, each female must be structurally correct, have a quiet disposition and have that all-important marketability. We have to keep all traits in balance and can't fall down in any area.”

While almost every ranch visitor is quick to notice and comment on the herd's amazing teat and udder structure and their moderate frame, Dave adds, “our emphasis on the teat and udder structure of our cows is showing its rewards. That said, teats and udders are constantly scrutinized.”

Ranch consultant Roger Gatz calls Judd Ranch “the No. 1 herd in the nation for teat and udder structure.”

In recent years the Judd family has worked to improve structural soundness and feet and legs. “The new buzzword today is ‘feet,’” Dave explains. “We are concentrating to make sure any new genetics we bring into our program are good footed.”

The Judd family strives to provide unmatched customer service, because they believe when a customer purchases Judd

Ranch genetics, they are making an investment in their herd. “We invite you to call or visit us anytime so we can discuss your operation and how our genetics can help meet your goals,” Dave says.

Team approach

It's a team at Judd Ranch with each family member contributing their strengths to the success of the ranch.

Dave handles the overall management of the ranch and is the go-to man. He and ranch consultant Roger Gatz of Cattleman's Connection oversee all mating decisions and decide which animals go into the female and bull sales.

“I've got a good family and a heck of a wife who all give 110% to this ranch and work their tails off,” Dave says with pride.

Judd Ranch's matriarch, Cindy, serves as office manager and oversees night calving.

Dave and Cindy's oldest son, Nick, graduated from Kansas State University in 2002 with an animal sciences and industry (ASI) degree. He manages the ET center — including detecting heats on donors and recipes — and is in charge of clipping sale cattle. He also manages hay sales and grain storage and handles the certification of chemicals for crop and pasture management. His wife, Ginger, is a 2003 K-State graduate with an ASI degree. She manages the pen bulls for the National Gelbvieh and Balancer Pen Bull Show including halter breaking and preparing to show. She also helps with

payroll. Their three children are Lily (18), Levi (15) and Lacy (12).

Youngest son, Brent, graduated from K-State in 2005 with an ASI degree. He serves as AI technician, processes all newborn calves, pregnancy checks, heads up the row crop planting and assists with sale duties. His wife, Ashley, is a 2005 K-State finance graduate and a 2008 Washburn University School of Law graduate. She handles cattle registrations, the ranch's web site and projects such as submitting DNA tests and the female sale's annual judging contest. They have two children — Oliver (9) and Avery Jo (5).

In addition to these specific tasks, each Judd Ranch family member chips in when and where needed — and that includes the grandchildren.

“I'm a super proud grandparent,” Cindy says. “Everyone works hard to get the job done daily. While working cows everybody has an ‘age appropriate’ job. As a family we help gather each morning, then at chute side, everyone has a station they are responsible for.”

Each grandchild has a role including tagging, keeping the alleyway loaded, collecting DNA samples, paperwork, etc. Even 5-year-old Avery is part of the action. “Avery makes sure we are good in snacks! That's an important job,” Cindy explains. “It is definitely a team effort around here and all hands on deck.”

Oldest grandchild Lily says it is a privilege to be able to spend time with family working on the ranch.

“It is fun and rewarding to be able to have a family so involved,” Dave adds. “They all step up to the plate and handle whatever task in front of them. We can't wait till Grandma and Grandpa can sit back and just watch them do it. We get so much enjoyment watching our grandkids making decisions and being involved. We are so blessed to be involved in agriculture.”

Cindy also points out the great hired crew that also helps the family. “They help keep the operation going daily.”

Dave summarizes, “We raise cattle, grass, hay and feed around here, but the No. 1 thing we are doing is raising the next generation. We want our grandkids to feel like they are part of the operation and valuable to its success.” ❖

Join us for a Judd Ranch
**CUSTOMER
 APPRECIATION
 DINNER & PARTY**
 Friday, Oct. 7 at 7:00 p.m.
 At the Ranch

You are invited to come to the ranch early on Friday, Oct. 7, to look over the sale offering, then join the Judd Ranch crew and fellow cattle producers at our annual Customer Appreciation Dinner & Party.

Check out our sale catalog online at
www.juddranch.com



Judd Ranch 32nd Annual Cow Power Gelb

Saturday, October 8, starting at 12 Noon • Located at t

79 Fall Yearling Open Heifers

- 36 *Homozygous Polled Purebred Gelbvieh*: 18 black, 18 red
- 4 *Double Polled Purebred Gelbvieh*: 2 black, 2 red
- 34 *Homozygous Polled Balancers*: 27 black, 7 red
- 4 *Black Double Polled Balancers*
- 1 *Purebred 1A Red Angus*

Every fall open (ready to breed) Gelbvieh and Balancer heifer features powerful Judd Ranch Dam of Merit cow family genetics.

These heifers are loaded with Cow Power genetics as they posted an excellent low birth to super growth spread: 69-lb. average birth weight with a performance-plus 677-lb. 205-day weight average.

79 of 79 are sired by a breed-leading homozygous polled AI sire: JRI General Patton 213B97 ET, JRI Prescribed Remedy 253E38, JRI Alan 68G3, JRI Optimizer 148A24, JRI Painted Black 254C741, JRI Secret Instinct 254U83, JRI Secret Instinct 2 ETN, JRI Pop A Top 2 ETN, JRI Real McCoy 270E23, JRI Marshall 214X2, JRI Chuck Wagon 207E33, MCCA Capitol Hill 516C, JRI Bottom Line 254G9, JRI Overachiever 253E39, Basin Pay-weight 1682 and 5L Defender 560-30Z.

Here's a sample of the fall open heifers selling:

JRI Ms Blk Cashmere 207J21 – This beautiful homozygous black, homozygous polled (75%) Balancer heifer was the No. 1 ratioing 205-day weight (880-lb. 205-day weight) fall open heifer out of 130 contemporaries. Her amazing 16-year-old dam, JRI Ms Wendy 207R611, has been honored 11 consecutive years as a Dam of Merit and/or as a breed elite Dam of Distinction. Oh I might add, Ms Wendy possesses a 99 teat/udder score.

JRI Ms Sweet Caroline 706J448 ET – This awesome homozygous black, homozygous polled purebred Secret Instinct daughter is one of four fall open ET full sisters who will sell on October 8th. These ET full sisters are daughters of Judd Ranch's incredible 11-year-old donor female, JRI Ms Barbara 706X34 ET (note photograph of Ms Barbara's ET full sister). These four ET daughters of Ms Barbara feature an 81-lb. birth weight average with a whopping 712-lb. 205-day weight growth spread.



JRI Ms Sweet Tee 254J17 – Check out the impressive birth-to-growth spread on this gorgeous black, homozygous polled purebred Secret Instinct 2 daughter: 86-lb. birth weight coupled with a performance-plus 765-lb. 205-day weight. Ms Sweet Tee nursed an 8-year-old Dam of Merit honored dam, JRI Ms Sweetie 254A97, and Ms Sweetie's dam 254S86 and her three grandams' 254M76, 254E52 & 254C4 were all honored as Dam of Merit females.

Check out the photograph of the scalebusting bull calf nursing Ms Sweet Tee's Dam of Merit honored grandam 254M76.

JRI Ms Sugar Coated 253J633 ET – This exceptional red, homozygous polled purebred heifer is an ET daughter of JRI Ms Secret Inspired 253Z53, Judd Ranch's phenomenal 9-year-old 2021 Dam of Distinction female. Ms Secret Inspired possesses a remarkable 359-day annual calving interval with a beautiful 98 teat/udder score. Ms Secret Inspired is photographed nursing one of her powerhouse bull calves who posted a whopping 1,040-lb. actual weaning weight.



20 Fall Bred and/or Fall Pairs

- 10 *Homozygous Polled Purebred Gelbvieh*: 8 black, 2 red
- 9 *Homozygous Polled Balancers*: 7 black, 2 red
- 1 *Black Double Polled Balancer*

Every female features Judd Ranch Dam of Merit genetics.

9 of 20 are fall bred heifers.

19 of 20 are homozygous polled and they are carrying guaranteed homozygous polled calves.

19 of 20 are sired by one of the following breed-leading homozygous polled AI sires: JRI General Patton 213B97 ET, JRI Optimizer 148A24, JRI Secret Instinct 254U83, JRI Secret Sensation 140A43, JRI Marshall 214X2, JRI Pedro 207Z74 & 3SCC Domain A163.

18 of 20 are confirmed safe in calf to one of these breed-leading homozygous polled AI sires: JRI Bandito 253H32, JRI Alan 68G3, JRI Prescribed Remedy 253E38, JRI Relentless 170H281, JRI Optimizer 148A24, JRI Real McCoy 270E23, JRI Pop A Top 2 ETN & JRI Secret Instinct 2 ETN.

Here are a few highlights among the Cow Power fall-bred (and/or fall pairs) females selling Saturday, October 8:

JRI Ms Pure Luck 224H9 – Wow, check out the resume on this beautiful black, homozygous polled purebred General Patton fall-bred heifer. Ms Pure Luck's 7-year-old dam, JRI Ms Star Power 224A8, has been honored as a Dam of Merit female in every year of eligibility which comes as no surprise as she maintains a mighty profitable 365-day annual calving interval. Ms Star Power produces phenomenal daughters and sons as her first son sold for \$9,000 with a 68-lb. birth weight coupled with a scalebusting 952-lb. actual weaning weight. As mentioned, Ms Star Power produces phenomenal daughters such as JRI Ms Pippa 224D9 who was honored as a Dam of Merit female in her first year of eligibility. Oh, I might mention, Ms Pippa's son sold for \$13,500 in the spring bull sale with a 74-lb. birth weight and a whopping 926-lb. 205-day weight.

JRI Ms Impressive 140D47 ET – Oh my, check out the resume on this beautiful black, homozygous polled purebred Secret Instinct fall-bred female. Ms Impressive was honored as a 2021 Dam of Merit female in her first year of eligibility. Ms Impressive's Dam of Merit honors come as no surprise as her four babies (3 heifers & 1 bull) to date have only averaged 84-lbs. at birth with a whopping 781-lb. 205-day weight growth spread. Ms Impressive produces awesome daughters such as JRI Ms Primarily Red 140G57 whose first baby will sell in next spring's bull sale and the meat machine features a 62-lb. birth weight, whopping 824-lb. 205-day weight with a scalebusting 1,298-lb. 365-day weight.

JRI Ms Pride N Joy 68H45 – Check out the impressive birth-to-growth spread on this awesome red, homozygous polled General Patton fall-bred heifer: 81-lb. birth weight coupled with a scalebusting 852-lb. 205-day weight. Ms Pride N Joy nursed a calf raising machine first-calf heifer and her widespread birth-to-growth stats come as no surprise as her grandams' 68T84 & 68E64 were both honored as Dams of Merit and breed elite Dams of Distinction.

Judd Ranch 45th Bull Sale

Gelbvieh, Balancer & Red Angus

Saturday, March 4, 2023
at the Ranch, Pomona, Kan.

SELLING 300+ Range-Ready Spring & Fall Yearling Bulls

Gelbvieh, Balancer & Red Angus Female Sale

at the ranch, Pomona, Kan. (one hour Southwest of Kansas City)



39 Spring Bred Heifers

- 15 Homozygous Polled Purebred Gelbvieh: 4 black, 11 red
- 2 Double Polled Purebred Gelbvieh: 1 black, 1 red
- 18 Homozygous Polled Balancers: 14 black, 4 red
- 2 Double Polled Balancers: 1 black, 1 red
- 2 Purebred 1A Red Angus

Every purebred Gelbvieh and Balancer spring-bred heifer features Judd Ranch honored Dam of Merit cow families.

38 of 39 are sired by a breed-leading homozygous polled AI sire. AI sires: JRI General Patton 213B97 ET, JRI Prescribed Remedy 253E38, JRI Optimizer 148A24, JRI Secret Instinct 254U83, JRI Secret Instinct 2 ETN, JRI Pop A Top 2 ETN, JRI Overachiever 253E39, JRI Top Protocol 132B42, JRI Marshall 214X2, Basin Payweight 1682, SAV Rainfall 6846, SAV Resource 1441, KG Justified 3023 and the purebred 1A Red Angus are daughters of 3SCC Domain A163 & WFL Merlin 018A.

39 of 39 are confirmed safe in calf to one of these breed-leading homozygous polled calving-ease AI sires: JRI Trade Secret 253G486, JRI Prescribed Remedy 253E38, JRI Pop A Top 2 ETN, JRI Real McCoy 270E23, JRI Secret Sensation 140A43, JRI Marshall 214X2, SAV Rainfall 6846, 9 Mile Enterprise 8180 & Bieber CL Energize F121.

Here are a few highlights among the Cow Power spring-bred heifers selling Saturday, October 8:

JRI Ms Pistol Annie 140H429 ET – This beautiful red, homozygous polled purebred spring-bred heifer is an ET daughter of JRI Ms Sugar N Spice 140C32, Judd Ranch's incredible 7-year-old donor female. Ms Sugar N Spice has been honored as a Dam of Merit female in every year of eligibility and it comes as no surprise as her dam 140W32 and grandams' 140P52, 140G42 & 140D4 have all been granted Dam of Merit honors. Ms Sugar N Spice is photographed with one of her powerhouse bull calves and producers, Ms Sugar N Spice features a scalebusting 995-lb. actual weaning weight average on her four natural born sons. Ms Pistol Annie has donor potential written all over her and she's AI'ed sale in calf to the ever-popular calving-ease Angus AI sire SAV Rainfall 6846 for a Feb. baby.



JRI Ms Reva 017H25 – This mighty attractive homozygous black, homozygous polled Resource daughter features an awesome birth-to-growth spread with her 75-lb. birth weight coupled with a performance-plus 787-lb. 205-day weight. Ms Reva's awesome birth-to-growth spread comes as no surprise as she features five generations of Dam of Merit honored genetics on her maternal side. The beauty photographed with her scalebusting 970-lb. actual weaning weight bull calf would be one of Ms Reva's grandams, JRI Ms Amber 017S9 and producers, at 15 years of age Ms Amber possesses a remarkable 365-day annual calving interval.



23 Spring Bred Females

- 10 Homozygous Polled Purebred Gelbvieh: 5 black, 5 red
- 7 Black Homozygous Polled Balancers
- 6 Purebred 1A Red Angus

Every purebred Gelbvieh and Balancer spring-bred female features Judd Ranch Dam of Merit cow family genetics.

Every female is homozygous polled and carrying a guaranteed homozygous polled baby.

23 of 23 are sired by one of the following breed-leading homozygous polled AI sires: JRI General Patton 213B97 ET, JRI Secret Instinct 254U83, JRI Secret Instinct 2 ETN, JRI Oklahoma 246C4, JRI Cowboy Cut 213S67, JRI Secret Component 285A393, Bolton Pay Day 45C, SLC Outback 142X, Basin Payweight 1682, Connealy Consensus 7229, Schiefelbein Effective 61 & SITZ Dash 10277. And, the purebred 1A Red Angus are daughters of 3SCC Domain A163, HXC Conquest 4405P, Brown BLW Legend A1965, Messmer Packer S008 & Basin Hobo 79E.

23 of 23 are confirmed safe in calf to one of the following breed-leading homozygous polled AI sires: JRI General Patton 213B97 ET, JRI Bandito 253H32, JRI Prescribed Remedy 253E38, JRI Trade Secret 253G486, JRI Alan 68G3, JRI Relentless 170H281, JRI Senator 213J37, SAV Rainfall 6846 & Bieber CL Energize F121.

Here's the kind of big-time producers you can expect to find in this offering:

JRI Ms Reba 253G91 – This calf raising machine red, homozygous polled purebred second-calf Oklahoma daughter flat knows how to raise powerhouse sons. Ms Reba's first son JRI Reign 253J291 sold in the spring bull sale for \$9,000 and the calving ease/meatwagon featured an 83-lb. birth weight, scalebusting 1,360-lb. 365-day weight, big ol' 16.3 square inch yearling ribeye with a carcass-premium 5.1 IMF. Ms Reba's second calving ease/meatwagon son features a 79-lb. birth weight with a whopping 689-lb. 205-day weight and he'll be at her side on sale day to show you Ms Reba's incredible producing ability. Producers, all spring-bred females with bull calves will have their bull calf at side on sale day to show you their earning power and these bull calves will all be retained for Judd Ranch's 45th Bull Sale next spring. Oh, I might add, Ms Reba is safe in calf to SAV Rainfall 6846, due Feb. 5th and producers, the baby will be a full sib to Ms Reba's \$9,000 son that sold in the spring bull sale.

JRI Ms Judd Domain 25G3 – This beautiful second-calf purebred 1A Red Angus female possesses a flawless 99 teat/udder score and Ms Judd Domain knows how to raise babies. Her first, JRI Judd Merlin 25J, sold in the spring bull sale for \$6,750 with a 72-lb. birth weight, scalebusting 1,292-lb. 365-day weight, big ol' 16.7 square inch yearling ribeye and bar none, the meatwagon was the best Red Angus bull in the sale offering. Ms Judd Domain is raising a beautiful Real McCoy heifer calf this year. Producers, Ms Judd Domain will enter the sale ring on sale day with her beautiful heifer calf at side and we'll sell buyers choice with the buyers option to double the money to purchase the pair. All spring heifer calf pairs will sell in this format.

14 Spring Open Heifers

- 4 Homozygous Polled Purebred Gelbvieh: 3 black, 1 red
- 6 Homozygous Polled Balancers: 5 black, 1 red
- 4 Purebred 1A Red Angus

Every spring open heifer features Judd Ranch Dam of Merit genetics.

14 of 14 are sired by a breed-leading homozygous polled AI sire: JRI General Patton 213B97 ET, JRI Bandito 253H32, JRI Prescribed Remedy 253E38, JRI Secret Powers 254C821, JRI Optimizer 148A24, SAV Rainfall 6846 & Deer Valley Growth Fund. The purebred 1A Red Angus are sired by 3SCC Domain A163 & 9 Mile Enterprise 8180.

Focused on Producing Mommas

Arkansas cattleman is using Judd genetics to build functional, docile, perfect-uddered females.

Cattleman Dave Plumlee is sold on the Judd Ranch female. He appreciates her docility, fertility, udders and her ability to produce calves that grow.

In the cattle business for more than 16 years, Dave Plumlee, Cotter, Arkansas, built his original herd based on Angus genetics. His breeding program goal has always been focused on the female — producing replacement heifers for his own herd.

Before buying his first Gelbvieh female he says he read a lot about Judd Ranch and the Gelbvieh breed. “I followed them for several years reading their newsletters,” Dave recalls. “I was intrigued by the Gelbvieh momma and the Judd program.”

Purchasing his first two Judd Ranch females in 2016, his goal today is to build a herd of 70 females that will be based on Judd Ranch genetics.

“My goal is to get eventually all 70 of my momma cows to be Judd Ranch genetics,” Dave says. When asked why Judd females, Dave says, “They are good mommas, they raise good calves and they have absolutely perfect udders.”

To achieve his goal, Dave has been purchasing a few Judd Ranch females each year as well as keeping the replacement heifers from those females. To speed up the herd-building process he called Roger Gatz, Judd Ranch consultant, last spring and discussed buying a Judd Ranch bull.

Roger helped Dave purchase a black, homozygous polled, purebred General Patton son utilizing the Judd Ranch Sight Unseen Program (SUS). He is using the Gelbvieh bull on his Angus-based cows. “I am excited to see his calves next year and plan to keep the heifer replacements,” Dave says.

Located in north central Arkan-

sas on the Missouri state line, the Plumlees calve year-round to effectively use his herd bull battery. “Kathy, my wife, and I, manage the herd day to day and I want a herd that is gentle and easy to handle,” Dave adds. “Judd Ranch genetics are definitely docile.”

The steer mates to Dave’s females are backgrounded for 60 days and then sold at the sale barn.

Dave also appreciates the Judd Ranch customer service. “Roger is so knowledgeable, patient and has been so terrific to work with. He is always willing to help no matter the question. And the Judd Family is so accommodating,” he says. “Everyone should go to a Judd Ranch Sale, they are so professionally run and the quality is so impressive,” he says. “It is a highlight for us each year. We have a neighbor who goes with us now and who has bought a few Judd Ranch females too.”

ALL females in this sale are Judd Ranch born and raised.

Dave summarizes his opinion of Judd Ranch genetics, “They are absolutely great and they have terrific offspring. I am looking forward to having a herd that looks like Judd Ranch cows.” ❖

From the beginning, Judd Ranch has focused on cow efficiency and reducing cow size and that focus is paying dividends. Judd Ranch females typically wean significantly more than 50 percent of their mature weight. This first-calf heifer



is exceeding that 50 percent... just look at her heifer calf at side.



Oh man, look at this meatwagon bull calf photographed with his Dam of Merit mama, JRI Ms Pure Elegance 254B451 and producers, the meatwagon posted a whopping 1,000# actual weaning weight.



Wow, note the teat and udder excellence and natural fleshing ability on this lovely Judd Ranch female JRI Ms Tippie 132R10.

Directions & Motel Information

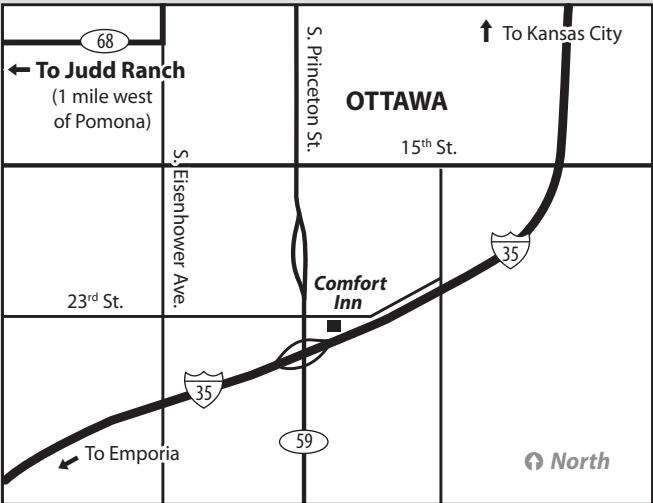
The Comfort Inn in Ottawa, Kan., is the official sale motel for Judd Ranch's Annual Cow Power Female Sale. Located just off I-35 at the south end of Ottawa, the Comfort Inn has a heated indoor pool and offers a complimentary breakfast, including eggs, sausage, biscuits, waffles, muffins, coffee and fruit juice. An Applebee's restaurant is within walking distance of the motel.

To reserve a room, call the **Comfort Inn at 785-242-6150 or 785-242-9898**, and request the Judd Ranch female sale room block. Because rooms at the Comfort Inn will be blocked for Judd Ranch customers only until Sept. 28, we suggest you reserve your room as soon as possible.

To get to the Comfort Inn if you are coming from the north on I-35, take Exit 183B to the first stop light and turn right. The motel is on your right. If you're coming from the south on I-35, you will get off on Exit 170.

To reach the motel from Judd Ranch, travel east on Highway K-68 toward Ottawa. At the west edge of Ottawa, K-68 goes north. Rather than going north, turn right on Eisenhower Road and go about 2 miles to 23rd St. Turn left or east on 23rd St. and go 1 mile. After you pass through the intersection, which has a stoplight, the motel is located down the road a bit on your right.

If you're traveling using a GPS, the motel's address is 2335 Oak Street, Ottawa, Kan. Additional rooms may be available at the nearby Super 8, 785-242-5551.



Uniformity Through Linebreeding

While inbreeding can reduce performance, linebreeding using carefully planned matings has been shown to elevate the influence of a genetic line or individual. Some extension beef specialists call linebreeding “the cornerstone of selective breeding.”

Linebreeding is a ratchet mechanism for holding any gains already made by selection, while attempting to make further gains. It is a plan that breeds one sire line and preserves that exceptional ancestor’s influence.

Linebreeding of livestock traces to the 1930s when agriculture’s success with hybrid corn caught the interest of cattle breeders. In 1934, the USDA Agricultural Research Service’s Fort Keogh Livestock and Range Research Laboratory in Miles City, Montana, undertook a long-term study on genetic selection and linebreeding of cattle. Those studies today involve a successful linebreeding program in which a high degree of relationship — 39 percent — to the founding sire has been maintained for 18 generations. Without linebreeding, researchers note that the relationship to an ancestor 18

generations ago would be less than .001 of a percent.

In linebreeding, the idea is to always keep the amount that any one animal contributes to the DNA of any descendent at or below 50 percent.

Michael Gonda, South Dakota State University Department of Animal Science professor, says there are two advantages to linebreeding for a seedstock producer. One advantage, he says, is that a seedstock producer can identify sires that are carriers of genetic abnormalities and quickly eliminate those carriers from the herd.

“This will show up if you breed those sires back to their daughters. We can identify abnormalities that we don’t yet have DNA tests for and don’t know much about,” Gonda explains.

The other advantage to linebreeding, Gonda says, is that seedstock producers can increase the relationship of their animals to a genetically valuable ancestor. Stacking the genes enables the linebred individual to transmit more characteristics than the other parent.

“We call this prepotency,” he explains. “This can be valuable to

seedstock producers who want to spread the genetics of a valuable, outstanding animal.”

Jim Lents echoes this in his book *The Basis of Linebreeding*: “Linebreeding fixes and maintains certain traits within a population of cattle that then have the prepotency to pass on consistently to future generations those characteristics that have been fixed.”

Animal Geneticist Dr. Sally Northcutt, Method Genetics, says that linebred cattle have fewer genetic defects and breed truer. She says the “why” behind cattle being truer is because they possess more homozygous, or identical, gene pairs.

“While we linebreed for a variety of reasons, one of the strongest reasons is that linebred cattle are more uniform and breed true,” explains Dave Judd, Judd Ranch.

Stringent approach required

Implementing and maintaining a linebreeding program isn’t easy. A seedstock producer must start with genetically sound individuals, and the person in charge of the program must know what they are doing and stay dedicated to the project.

Roger Gatz, Judd Ranch consultant, points out that Dave’s solid understanding of the principles of genetics and how to apply the technology and strategies needed to have a successful linebreeding program have been critical components to Judd Ranch’s successful linebreeding program.

Judd Ranch’s linebreeding program started many years ago. Roger adds that seeds for a linebreeding program at Judd Ranch took root back in the days when a majority of breeders were focused on breeding really big-framed females and bulls.

Dave didn’t agree with the “bigger is better” methodology. He wanted more moderate-framed, highly fertile cattle that had capacity and were excellent grass converters. He wanted a linebreeding program that concentrated on specific traits such as reproductive efficiency, calving ease and growth.

“We did a lot of research before embarking on a linebreeding program,” Dave explains. “While we were aware of the work it

Don't Miss THE WAGON RIDES!



Another fun highlight of the Fall Female Sale weekend are wagon rides offered by Judd Ranch customers Lee & Stacy Marriott of Rocking M Ranch, Stover, Mo.

Lee and Stacy will have their horse-drawn wagon at Judd Ranch on Friday evening and Saturday morning and will be giving ranch tours to fellow Judd Ranch customers.

For the last few years, the couple has been participating in the Cheyenne Frontier Days Parade. They have a four-up of gray Percherons. The Marriotts head to the Cheyenne Frontier Days seven days prior to the first performance with their Jack Russell, Jack, and stay until the last performance, participating in the Grand Entry. They even participate in the cattle drive the same way that the teamsters did at the end of World War II.

You can visit their Rocking M Ranch Western Emporium Facebook page — @RMRWE — and watch several videos about the horses and wagon at Cheyenne Frontier Days.

Rocking M Ranch Wagon Rides

Lee & Stacy Marriott | 573-375-2768

*Every female selling in this year's
Cow Power Female Sale
sells with a genetic defect-free guarantee
for known genetic defects.*



*Whoa, look at the bull calf nursing this Judd Ranch Dam of Distinction female JRI Ms Secretly Inspired 253Z53. That beef machine weaned off Dam of Distinction mama at 1,040 lbs. **October 8th Ms Secretly Inspired's homozygous polled purebred ET daughter JRI Ms Sugar Coated 253J633 sells in the fall open heifer offering.***

would take to develop a successful program, we knew this was the direction we wanted to take since it would increase the uniformity and prepotency of our cattle — providing we started with the right sire.”

So, when other breeders were heading the “bigger is better” route, the Judd Ranch program opted for a different path.

Judd Ranch’s linebreeding program began with a moderate-framed, thickly made bull named Rolls Roych. He combined outstanding performance with structural soundness and a huge scrotal circumference and was what many cattlemen would call a “beef-packed machine.”

“We deliberately began mating related animals,” Dave explains.

Using Rolls Roych as its foundation, Judd Ranch’s linebreeding program advanced with a Rolls Roych son named Partner, followed by a Rolls Roych grandson named Grand Prix and then Freedom, who has Rolls Roych in his pedigree.

The Judd linebreeding program also includes Free Agent, a Freedom son; and Top Secret, a Free Agent son.

“One of our goals from the start has been to increase uniformity and consistency, and linebreeding has helped us achieve that goal,” Dave adds. “Linebreeding has also helped us eliminate genetic defects and attain genetic purity.

“Linebreeding benefits us, and our customers benefit from it as well. It’s a win-win all around.” ❖

Homozygous Polled: Labor-Saving and More

Dehorning calves at birth or later is a nuisance and it has been proven that horned cattle are an economic disadvantage both in the cow herd and the feedlot.

Are you confused about the genetics associated with horned, polled and scurred cattle? If so, you're not alone. There are a lot of misconceptions and confusion about horned/polled/scurred cattle.

Darrh Bullock, University of Kentucky extension professor, explains, "Horned feeder calves are not desirable; they are potential hazards for other cattle and the humans working them. For this

reason, calves with horns are discounted at the sale barn."

Even though scurs pose no danger to other cattle or humans they are still discounted by many buyers. To avoid these discounts, beef producers either have to breed them to be smooth polled or de-horn/de-scur their calves.

"If you plan to breed for smooth polled cattle it is important to understand the genetic

action of the poll/horn gene and the scur gene; however, you will learn that avoiding horns is relatively easy, but eliminating scurs can be much more difficult," Bullock says.

The basics of genetics tell us that since the polled gene is dominant over the horned gene, animals with one copy of the polled gene and one copy of the horned gene will not have horns, and a naturally hornless animal can be created in one generation; it also means it is easier to make more polled animals faster than if the polled gene was recessive.

An animal can have one of three combinations for the polled/horned gene:

PP = homozygous polled — this animal has no horns, and all offspring from the animal will be born without horns

Pp = heterozygous polled — this animal does not have horns, but offspring may or may not have horns depending on their mate

pp = homozygous horned - will pass on the horned gene to offspring that may or may not exhibit the gene depending on the other parent

Since polled is dominant over horned, if you mate a homozygous polled bull to a group of females all of the offspring will be polled, regardless of the genotype of the cows. However, when mating a heterozygous polled bull (Pp) to heterozygous polled cows (Pp) there is a 25% chance the calves will be homozygous polled, 50% chance they will be heterozygous polled and a 25% chance of being homozygous horned. This means about 75% of the calves will be polled and 25% horned, even though the bull and cows were polled.

Cow-calf producers who have horned calves that require dehorning are familiar with the time and labor involved with dehorning and understand the stress calves undergo in this process.

University of Tennessee researchers found that calves dehorned when they are more than two months of age can require up to two weeks to return to their pre-dehorning weight. Calves de-

horned at six months of age or older incur a setback in performance of more than 100 days. Dehorning at three months also showed a negative performance response, although it was less than calves dehorned at six months.

While working with a Wyoming seedstock producer who weighed his spring-born calves twice in the fall, Judd Ranch Consultant Roger Gatz put pencil to paper and found calves that were dehorned and castrated never gained in the three- to four-week period between the first and second weighing.

"While I realize castrating is a big event in a calf's life, so is dehorning," Gatz explains. "Freshly dehorned calves tend to be depressed. They don't eat or gain as they would during a non-stressful time.

"That's leaving money on the table when you consider you can dehorn genetically with homozygous polled bulls and not be bothered with manual dehorning. Plus, dehorning beef cattle via genetics is a welfare-friendly practice that everyone in the industry should embrace and support."

Judd Ranch DNA tests individ-

ual herd members for the homozygous polled factor. While each test comes with a price, Dave Judd calls the amount spent "an investment in what our customers want."

*More than 92%
of the females selling
on October 8 are
Homozygous Polled*

In this year's female sale, 162 of the females selling are confirmed homozygous polled and every homozygous polled female will be bred to a homozygous polled sire, resulting in a homozygous polled calf.

Roger is a big fan of homozygous polled cattle. "I don't know of any trait in the registered cattle business that will give you more return on investment than homozygous polled genetics. Cattlemen's Connection AI semen sales features 100-plus Gelbvieh and Balancer AI sires and 95% plus of all sales are homozygous polled sires." ❖

**NO PAMPERING.
JUST SOLID PERFORMANCE.**



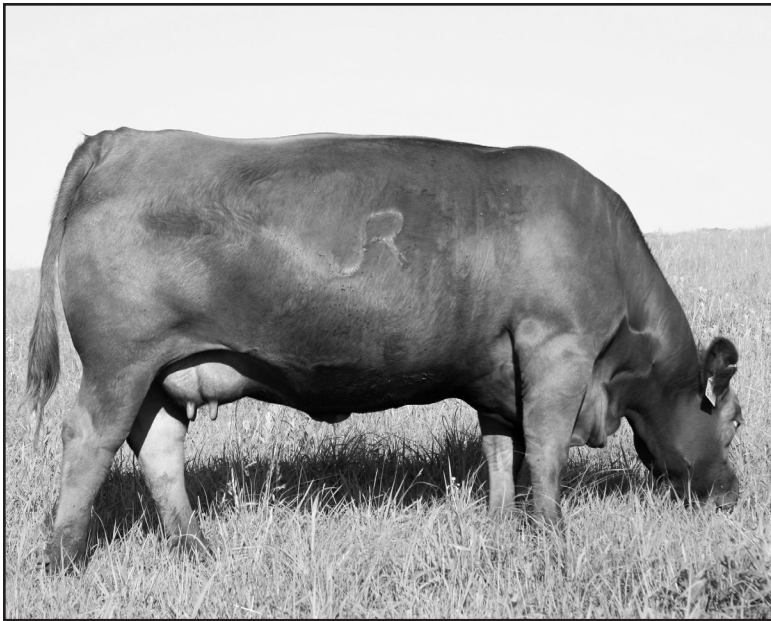
The pastures at Judd Ranch are filled with first-calf heifers with big strapping bull calves. The bull calf at side of this first-calf heifer pounded the yearling weight scales at 1,343 lbs.



Judd Ranch females excel in natural fleshing ability, fertility and maternal power. The bull calf nursing this first-calf heifer started off at 79 lbs. and hit the yearling weight scales at 1,353 lbs. That's true Cow Power!



Man oh man, note the powerhouse bull calf on this Judd Ranch first-calf heifer.



This many-time honored Judd Ranch Dam of Merit female JRI Ms Freedom 9M11, produced big ol' strapping calves for 15 plus years.

360° Approach to Herd Health

Customers can feel confident when buying Judd genetics; they are backed by a strong herd health program and are tested guaranteed to be problem-free

The Judd family has two beliefs when it comes to herd health. First, it's better to prevent disease than to treat it. Second, Judd Ranch customers deserve disease-free females and bulls.

"Our herd health program starts the day a calf is born and continues throughout its lifetime or until an animal is on a buyer's truck," explains Dave Judd. "Our program integrates vaccination, medicine and management to prevent disease. We keep disease at a minimum by preventing exposure, and keep disease resistance high through nutrition,

management and housing programs. While this takes a continual effort, it is worth the investment. We benefit, and our customers deserve this reassurance."

Dr. Larry Mages, Cottonwood Animal Hospital, Ottawa, Kan., oversees the ranch's day-to-day veterinary service and has served as the ranch's local veterinarian for more than 20 years. Dr. Mages is the guy you typically see at the settlement table on sale day signing health papers.

Negative for Brucellosis

Judd Ranch tests all cows and

herd bulls annually for brucellosis and is an Accredited Brucellosis Free Herd — Certification #271. Judd Ranch has maintained this brucellosis-free status for more than 20-plus years.

Negative for Johnes's Disease

The prevention of Johnes's disease, a silent chronic infection causing intermittent to continuous diarrhea and wasting in cattle more than two years of age, is always on Judd Ranch's radar.

Even though Judd Ranch has never experienced, or even suspected, any cases of Johnes's disease in the herd, Judd Ranch has been testing for Johnes's disease for more than 15 years.

"I can say with confidence that we are an extremely low-risk Johnes's disease herd," Dave says. "I wish I could say we're a Johnes's-free herd, but no cowman can say that. We're a Level 4 Johnes's-free herd."

When it comes to herd health and Johnes's disease, only an elite group of U.S. beef herds can say that they are a low-risk herd, and testing shows Judd Ranch is among the herds that can make that statement with confidence.

Genetic Defect Free

Dr. Ron Lemenager, Purdue University beef extension specialist, urges cattle producers to avoid purchasing animals that carry genetic defects and can pass these defects to their offspring. And, while a genetic defect is not a disease, a genetic defect is similar to a disease because it can cause significant problems in a herd.

Ranch consultant Roger Gatz, Cattlemen's Connection, and the Judd Ranch crew agree. That's why Judd Ranch herd sires and AI sires have been tested for known genetic defects and are known free from known genetic defects.

Every bull selling through the Judd Ranch Bull Sale and every female selling at a Judd Ranch Cow Power Female Sale in the fall sells with a genetic defect-free guarantee for known genetic defects. ❖

Judging Contest Participants Can Earn Sale Credit

Each year the Judd family hosts a judging contest prior to the Female Sale. Youth and adults of all ages are encouraged to participate and have the opportunity to win sale credit, plus new this year other cool prizes.

Judd Ranch awards individuals who place first or second in their age division a sale credit worth \$250 for first place and \$150 for second place. Divisions include adult, senior (youth 13 to 18 years old), and junior (youth 12 years and under).

"This is pretty easy money when you consider that all you have to do to earn this sale credit is judge and place first or second in your di-

vision," explains Ashley Judd, who helps organize the contest. "Why not judge and give it a shot?"

The annual judging contest starts promptly at 9 a.m. on sale day and takes about one hour. Pre-registration is not required. Registration begins at 8 a.m. The contest will include four classes of bulls and females.

Cindy Judd adds that the judging contest is an important part of sale day.

"Dave judged when he was a kid, and the experience helped hone his speaking ability and cattle selection skills," she explains. "Even with lots of data on animals, visual appraisal is an important tool when

selecting animals for your herd. The animals you purchase or have in your herd must have the frame, muscle pattern, temperament and other qualities that can only be viewed with the eye.

"This judging contest is also the ideal time for parents to work with their kids. While we encourage youth to make their own final decisions, parents can take the opportunity to teach kids what traits to look for."

Sale credit for the top two judges in all three divisions will be issued as a gift certificate. This certificate or sale credit can only be used toward the purchase of a female at the Oct. 8 sale. It cannot

be saved for other sales.

The sale credit must also be used by the person who earned the sale credit or by an immediate family member. It is not transferable to a person outside the immediate family.

"A junior or senior division winner can give the sale credit to his or her mom, dad, sister or brother and a mom or dad can pass her or his sale credit to a son or daughter to use," Cindy explains. "The goal is to keep the sale credit in the family."

To learn more about the judging contest and sale credit, contact Ashley Judd at 785-453-2291 or judd07@gmail.com. ❖



Judd Ranch genetics are bred to perform and note the meat machine bull calf at the side of this first-calf heifer.



You will see pair after pair of first-calf heifers like this in Judd Ranch's pastures.

Judd Ranch 32nd Annual Cow Power Gelbvieh, Balancer & Red Angus Female Sale

Saturday, October 8, at 12 Noon

at the ranch, Pomona, Kansas

(one hour southwest of Kansas City)

175+ Lots Sell

81 Purebred Gelbvieh
81 Balancers
13 Purebred 1A Red Angus

Selling females from
exceptional Dam of Merit
Cow Families!

Look for high quality
females like
this to sell!

- 100% of the purebred Gelbvieh & Balancer pedigrees feature Judd Ranch Dam of Merit cow families
- 162 homozygous polled females sell
- Every bred homozygous polled female is carrying a guaranteed homozygous polled calf
- 99% of the females are sired by breed-leading homozygous polled AI sires

Ranch Consultant
Roger Gatz
Cattlemen's Connection
Call today for a sale catalog:
1-800-743-0026



Dave & Cindy Judd
Nick & Ginger Judd & family
Brent & Ashley Judd & family
Pomona, KS 66076
Phone: 785-566-8371
www.juddranch.com

FREE DELIVERY
within the continental U.S.
on purchases of
\$20,000 and more.
Door-to-door delivery!

Check out our sale catalog online at www.juddranch.com

Sale Catalog Request

_____ Please send me a sale catalog for Judd Ranch's 32nd Cow Power Female Sale.

_____ Please call me to discuss Judd Ranch's Sight Unseen Program.

Name _____

Ranch Name _____

Address _____

City _____ State _____ ZIP _____

Telephone with Area Code _____ Best time to call _____

Please return to Cattlemen's Connection, PO Box 156, Hiawatha, KS 66434
or fax to 785-742-3503.

JR

HOW TO PARTICIPATE ON

LiveAuctions.TV

1

CREATE AN ACCOUNT

Click "Register to Bid" on the top right corner of LiveAuctions.tv. Fill out the required information to bid online. Agree to the terms of service and finish with the "register" button.

2

REGISTER FOR A BUYER NUMBER

From the home page or the "all auctions" page, choose the sale you're interested in. Once selected, click the "request a buyer number" button. Verify your email address with the email verification link. To verify your mobile number, click "send token". Follow the steps to authorize your mobile device and click "submit".

3

BID SUCCESSFULLY

You will only have to complete the two-step verification process one time. After that, you will be able to immediately request a buyer number on any auction without verification. If you're a winning bidder, your lots will appear in your cart on the bottom of your screen. You will be contacted by the ranch or sale manager for your payment and shipping plans.

IF YOU NEED HELP REGISTERING TO BID OR TO VIEW
THE AUCTION PLEASE CONTACT TECHNICAL SUPPORT

(682) 816-4900

OR

TECHSUPPORT@LIVEAUCTIONS.TV.